

# MONTHLY MEMBERSHIP PROGRESS REPORT

District 2 S5

Results as of: 6/30/2024

GMT:

LOCATION TEXAS

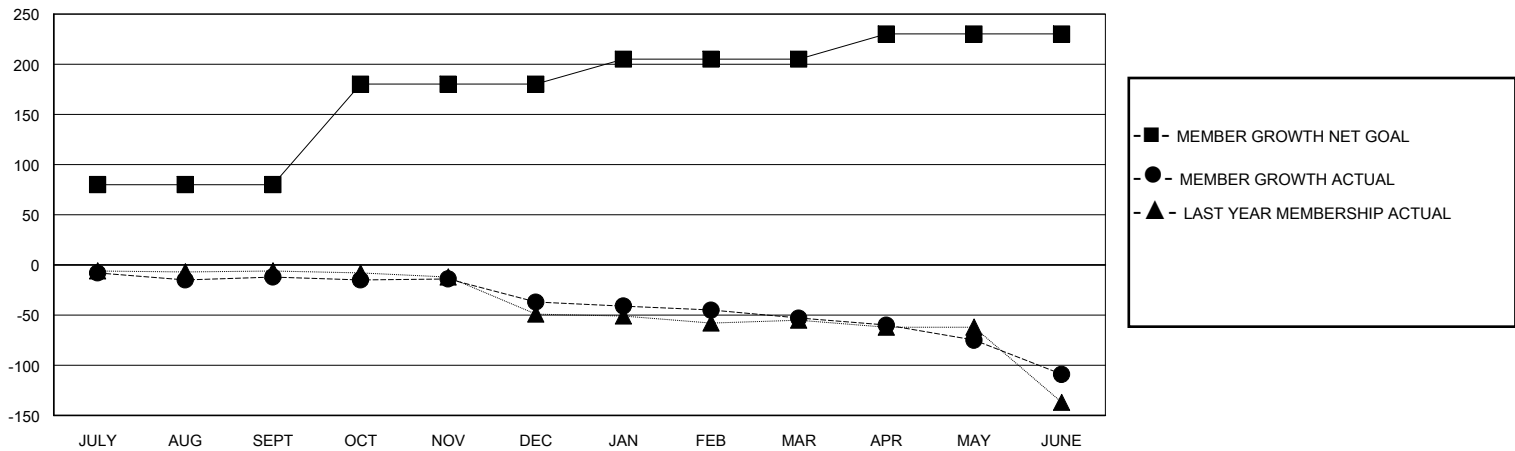
GMT CA

Clubs				Members			
RESULTS FOR 2023-2024				RESULTS FOR 2023-2024			
QUARTER	NEW CLUB GOAL	NEW CLUBS	DROPPED CLUBS	QUARTER	MEMBER GROWTH NET GOAL	MEMBER GROWTH ACTUAL	DROPPED MEMBERS ACTUAL (including transfers)
JULY/AUG/SEPT	0	0	1	JULY/AUG/SEPT	80	51	61
OCT/NOV/DEC	1	0	0	OCT/NOV/DEC	100	52	72
JAN/FEB/MAR	0	0	0	JAN/FEB/MAR	25	52	64
APR/MAY/JUNE	0	0	1	APR/MAY/JUNE	25	45	97

GOALS AND ACTUAL NEW CLUBS CUMULATIVE



GOALS AND ACTUAL MEMBERS CUMULATIVE



DROPPED CLUBS: 2	40 CLUBS OF 55 ADDED 1 OR MORE NEW MEMBERS	<b>GENDER DISTRIBUTION</b> MALE 1,228 (58.73%) FEMALE 863 (41.27%)
<b>DROPPED MEMBERS</b> DECEASED 20 CLUB CANCELLED 5 OTHER 268 TOTAL 293	<a href="#">CLICK HERE FOR CUMULATIVE MEMBERSHIP DATA</a>	TOTAL FAMILY UNIT MEMBERS 396 FAMILY MEMBERS PAYING HALF DUES 203